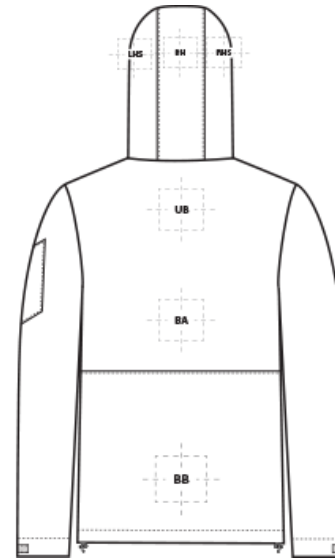
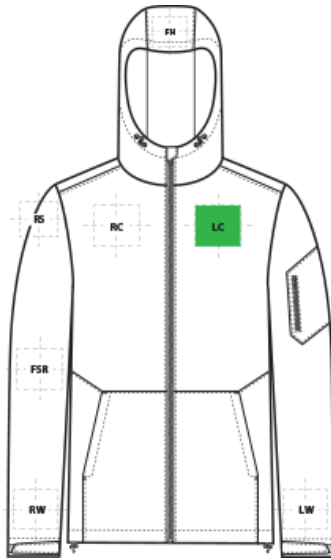


# DECORATION SPEC SHEET

**SPORT-TEK.**

JST56 Sport-Tek® Waterproof Insulated Jacket



## FRONT DECORATION DIMENSIONS

<b>LC</b>	Left Chest	4"Hx4"W	Primary
<b>RC</b>	Right Chest	4"Hx4"W	

## BACK DECORATION DIMENSIONS

<b>BA</b>	Back	10"H x 14"W	
<b>BB</b>	Back Bottom	6"H x 14"W	
<b>UB</b>	Upper Back	4"H x 14"W	

## SLEEVE DECORATION DIMENSIONS

<b>FSR</b>	Full Sleeve Right	4"HX16"W	
<b>LW</b>	Left Wrist	4"W x4"H	
<b>RS</b>	Right Shoulder	4"W x4"H	
<b>RW</b>	Right Wrist	4"W x4"H	

## HOOD DECORATION DIMENSIONS

<b>BH</b>	Back Hood	3"Hx3"W	
<b>FH</b>	Front Hood	3"Hx3"W	
<b>LHS</b>	Left Hood Side	5"H x 5"W	

# DECORATION SPEC SHEET

**SPORT-TEK.**

JST56 Sport-Tek® Waterproof Insulated Jacket

<b>RHS</b>	Right Hood Side	5"H x 5"W	
------------	-----------------	-----------	--

Decoration range is dependent on product, decoration method and equipment used. Allow for 1/8" per size. Sizing is based off: Adult-L, Women's-M, Youth-L, Girls-M. Please consult with your decorator or supplier.

## DECORATION TECHNIQUES



**EMBROIDERY**



**SCREEN PRINTING**

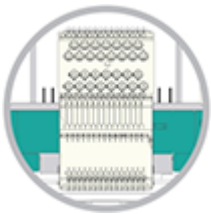


**HEAT TRANSFERS**

## ESSENTIAL PRODUCT INFORMATION

**Due to the nature of 100% polyester fabrics, special care must be taken throughout the decoration process when heat is applied for curing. Please consult with your decorator or material supplier.**

## TIPS FROM OUR EXPERTS BY DECORATION TECHNIQUE



### **EMBROIDERY**

Embroidery is the art of embellishing a piece of apparel with a needle and thread or yarn creating stunning visual representations of various types of art. This is achieved by converting logos in a digitizing software and using various stitch patterns, angles, density and stitch types to create depth, movement and detail. Thread can be made from many materials. The most commonly used threads are polyester and rayon. There are also options such as metallic, cotton, nylon, silk and even Nomex thread for fire resistance. Embroidery has a very high-perceived value and is popular for use on most apparel, bags, hats, luggage, blankets and more!

**In order to maintain waterproof integrity, please consult with your decorator, equipment, and consumable supplier for best practices.**



### **SCREEN PRINTING**

An imprinting method in which the image is transferred to the fabric. Ink is squeegeed through a stenciled screen stretched over a frame and then cured in a dryer.

**Low-cure poly inks are required. Grey or black bleed blockers may be necessary.**

# DECORATION SPEC SHEET

**SPORT-TEK.**

## JST56 Sport-Tek® Waterproof Insulated Jacket



### HEAT TRANSFERS

A graphic, name and or number applied to a textile with a heat press. Great for quantities of any size, sports name and numbering, fashion, performance wear, print on demand programs and on-site decorating events.

**Heat transfers with an aggressive adhesive are required for stain release, water resistant/waterproof coated and nylon fabrics. Consult with your transfer supplier for recommendations.**

Please consult with your decorator, consumables and equipment suppliers or reach out to [decoratorrelations@sanmar.com](mailto:decoratorrelations@sanmar.com) for further information.