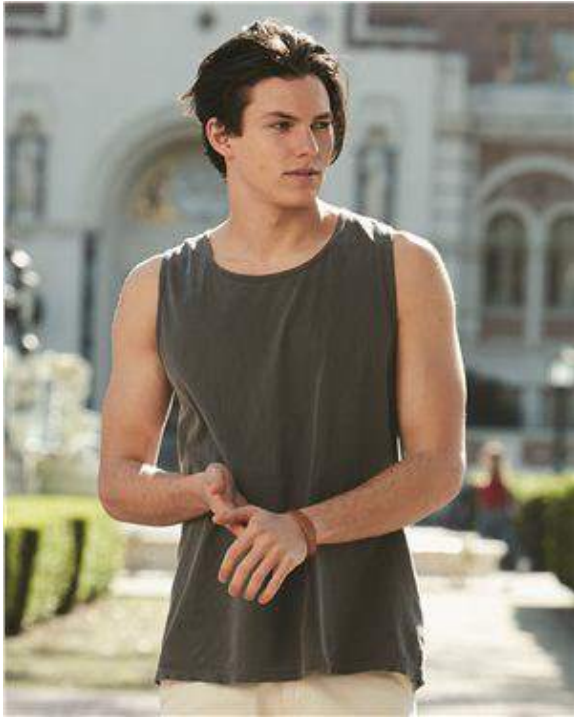


Comfort Colors - Garment Dyed Heavyweight Ringspun Tank Top - 9360



- 6.1 oz., pre-shrunk 100% ringspun cotton
- Soft washed garment dyed fabric
- Self-fabric bound neck and armholes
- Twill label
- Double-needle stitching on neck, armholes and bottom hem

NOTE ON THE PRINTING OF NEONS:

Fabric Temperature

The neon optical and pigment dyes in these shirts are reactive to heat. The recommended maximum fabric temperature is 320 degrees. Printers are advised to use temperature strips to measure the temperature of the fabric as it passes through the dryer or heat source.

Dryer Temperature

Dryer temperature should be adjusted to keep the fabric below 320 degrees. When placing garments on the belt, lay them as flat as possible to avoid high spots that may touch the inside of the dryer or come closer to heat elements.

It is recommended to test (and launder) a shirt before a full production run. This information is provided only as a guide; individual results may vary.

Colors

| | | | | | | | | | | | | | |
|--------|--------------|-------------|----------|-----------|------------|-----------|-----------------|-------------|---------|-------------|-------------|------------|-----------|
| White | Black | Aloe | Blossom | Blue Jean | Bluespruce | Brick | Bright Salmon | Butter | Celadon | Chalky Mint | Chambray | Chili | Chocolate |
| Citrus | Crimson | Crunchberry | Denim | Flo Blue | Granite | Grape | Grass | Grey | Hemp | Ice Blue | Island Reef | Ivory | Kiwi |
| Lagoon | Light Green | Lime | Melon | Neon Blue | Neon Green | Neon Pink | Neon Red Orange | Neon Yellow | Paprika | Peony | Pepper | Periwinkle | Raspberry |
| Red | Royal Caribe | Sandstone | Sapphire | Seafoam | True Navy | Violet | Watermelon | | | | | | |

Finished Measurements

| | S | M | L | XL | 2XL | 3XL | 4XL |
|-----------------------|--------|--------|--------|--------|--------|--------|-----|
| Body Length | 27 | 29 | 30 | 31 | 32 1/3 | 33 3/4 | 34 |
| Body Length Tolerance | 2 | 2 | 2 | 2 | 2 | 2 | 2 |
| Body Width | 18 3/4 | 20 1/4 | 22 1/4 | 23 1/2 | 25 1/2 | 28 | 30 |
| Body Width Tolerance | 2 | 2 | 2 | 2 | 2 | 2 | 2 |