



## Eddie Bauer® Ladies Full-Zip Microfleece Jacket. EB225



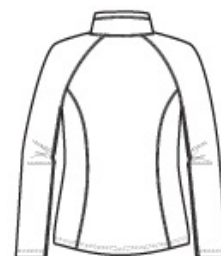
Warmth and comfort--without the bulk. With flatlock stitching throughout, this lightweight, versatile jacket is cozy on its own or layers easily under a jacket when it's cold. Reverse coil zippers, front zippered pockets, open cuffs and an open hem. Princess seams, contrast Eddie Bauer logo embroidered on hem. Made of 8.8-ounce, 100% polyester microfleece with an anti-pill finish.

### CARE INSTRUCTIONS

Machine wash cold. Only Non-chlorine bleach when needed. Tumble dry low. Cool iron on reverse side if necessary.

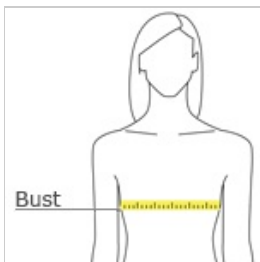


front



back

### HOW TO MEASURE



#### BUST

With arms down at sides, measure around the upper body, under arms and around the fullest part of the bust.

### SIZE CHART

	XS	S	M	L	XL	2XL	3XL	4XL
Size	2	4/6	8/10	12/14	16/18	20/22	24/26	28/30
Bust	32-33	34-35	36-37	38-40	41-43	44-46	47-49	50-52

### COLOR INFORMATION





## Eddie Bauer® Ladies Full-Zip Microfleece Jacket. EB225

### PRODUCT MEASUREMENTS

	XS	S	M	L	XL	2XL	3XL	4XL
Bust	17 1/2	18 1/2	19 1/2	21	22 1/2	24	26	28
Body Length	26	26 1/2	27	28	29	30	30 1/2	31
Sleeve From Shoulder	31 1/4	32	32 3/4	33 1/2	34 1/4	35	35 1/2	36

#### BUST

Measured one inch below armhole.

#### BODY LENGTH

Measured from high point of shoulder from the front.

#### SLEEVE FROM SHOULDER

Measured from high point of shoulder to finished hem at sleeve.